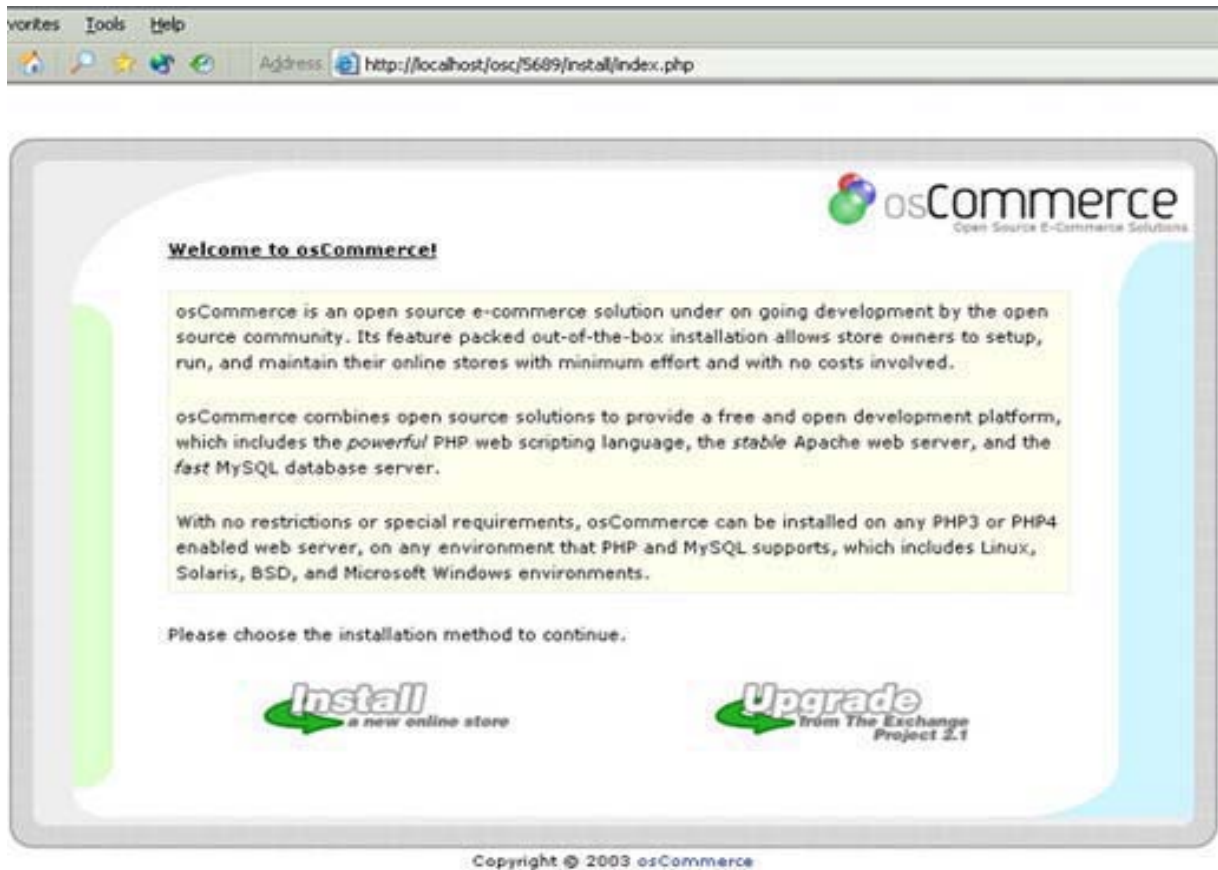


1. You should download **XXXX.zip** file from [www.ourdownloadsite.com](http://www.ourdownloadsite.com) where your osCommerce template is stored. Once you've downloaded the file, you should unpack the archive and save the unpacked files to any folder on your computer.
2. Your archive manager will create **XXXX** file. You should rename it using **shop** as the new name. Then copy it to the root catalogue of your web server.
3. Type **http://YOUR\_SITE/shop/** in your browser (**YOUR\_SITE** – is an address of your web server).



If you have any problems with your browser, try **http://YOUR\_SITE/shop/install/**. Check for the closing slash at the end of the URL, as some of the configurations of the web servers may not process URLs without the closing slash.

4. Click **Install** to get the next step.



5. For the correct installation check in both matchboxes (Import Catalogue Database and Automatic Configuration) and press **Continue**.

The screenshot shows a web browser window with the address bar displaying `http://localhost/osc/5689/install/install.php?step=2`. The main content area is titled "New Installation" and "Database Import". Below this, it says "Please enter the database server information:". The form contains the following fields and options:

- Database Server:**  (Help icon) Hostname or IP-address of the database server
- Username:**  (Help icon) Database username
- Password:**  (Help icon) Database password
- Database Name:**  (Help icon) Database Name
- Persistent Connections:**  (Help icon)
- Session Storage:**  Files  Database (Help icon)

At the bottom of the form are two buttons: "Cancel" and "Continue". The footer of the page reads "Copyright © 2003 osCommerce".

As osCommerce uses database to store data, you should fill in all the fields to provide the information on your database server. osCommerce installing script will import values from the file **WEB\_ROOT/shop/install/oscommerce.sql** to the database you point to (**WEB\_ROOT** is the path to your web server's root catalogue).

**Database Server** – your database server address

**Username** – the name of the user who has rights to create and change databases and tables

**Password** – password of the user

**Database Name** – the name of your osCommerce database

**Session Storage** – special storage to keep sessions' values

6. Press **Continue** for the next step. osCommerce will process the test connection to the database server now. You will be informed about the results. If osCommerce fails to process the connection, you should get in touch with your administrator to check your server settings.



7. Press **Continue** now. osCommerce will add the values to the database now. This process may take several minutes.



8. Check osCommerce configuration settings. It's recommended to keep these settings unless you have to change them. After checking the settings press **Continue**.



The image shows the 'New Installation' configuration screen for osCommerce. The page has a light blue header with the osCommerce logo and tagline 'Open Source E-Commerce Solutions'. Below the header, the title 'New Installation' is underlined. The main heading is 'osCommerce Configuration'. A sub-heading reads 'Please enter the web server information:'. A yellow-shaded form contains the following fields:

WWW Address:	<input type="text" value="http://localhost/osc/56"/>	?
	The full website address to the online store	
Websserver Root Directory:	<input type="text" value="d:/www/apache/apachi"/>	?
	The server path to the online store	
HTTP Cookie Domain:	<input type="text" value="localhost"/>	?
	The domain to store cookies in	
HTTP Cookie Path:	<input type="text" value="/osc/5689/"/>	?
	The path to store cookies under	
Enable SSL Connections:	<input type="checkbox"/>	?

At the bottom of the form area are two buttons: 'Cancel' on the left and 'Continue' on the right. Below the entire form area, centered, is the text 'Copyright © 2003 osCommerce'.

9. We recommend that you save the settings with the form but create a new account (user) for OsCommerce.

**osCommerce**  
Open Source E-Commerce Solutions

New Installation

**osCommerce Configuration**

Database Server:  ?  
Hostame or IP-address of the database server

Username:  ?  
Database username

Password:  ?  
Database password

Database Name:  ?  
Database Name

Persistent Connections:  ?

Session Storage:  Files  Database ?

Copyright © 2003 osCommerce

10. To finish the installation press **Continue**. You will be shown a notification about successful installation.

**osCommerce**  
Open Source E-Commerce Solutions

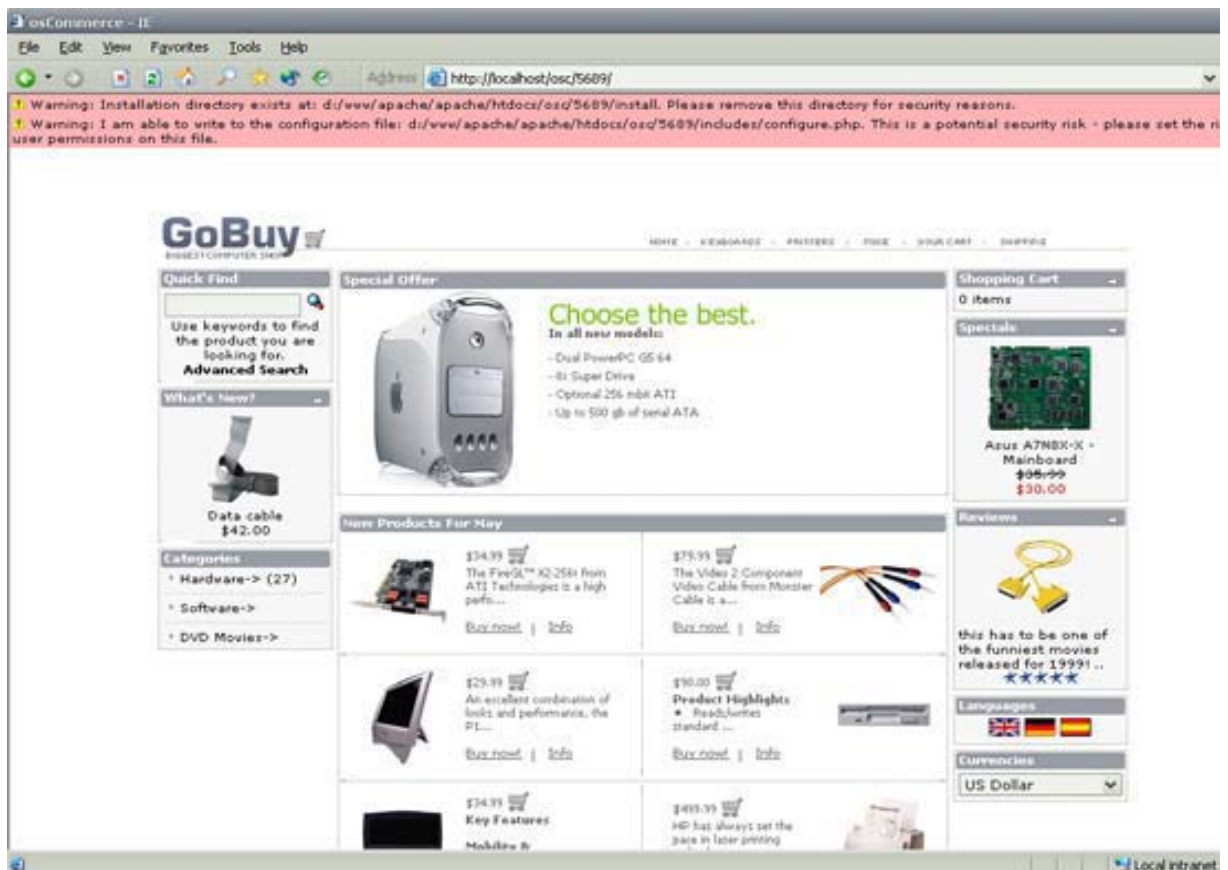
New Installation

**osCommerce Configuration**

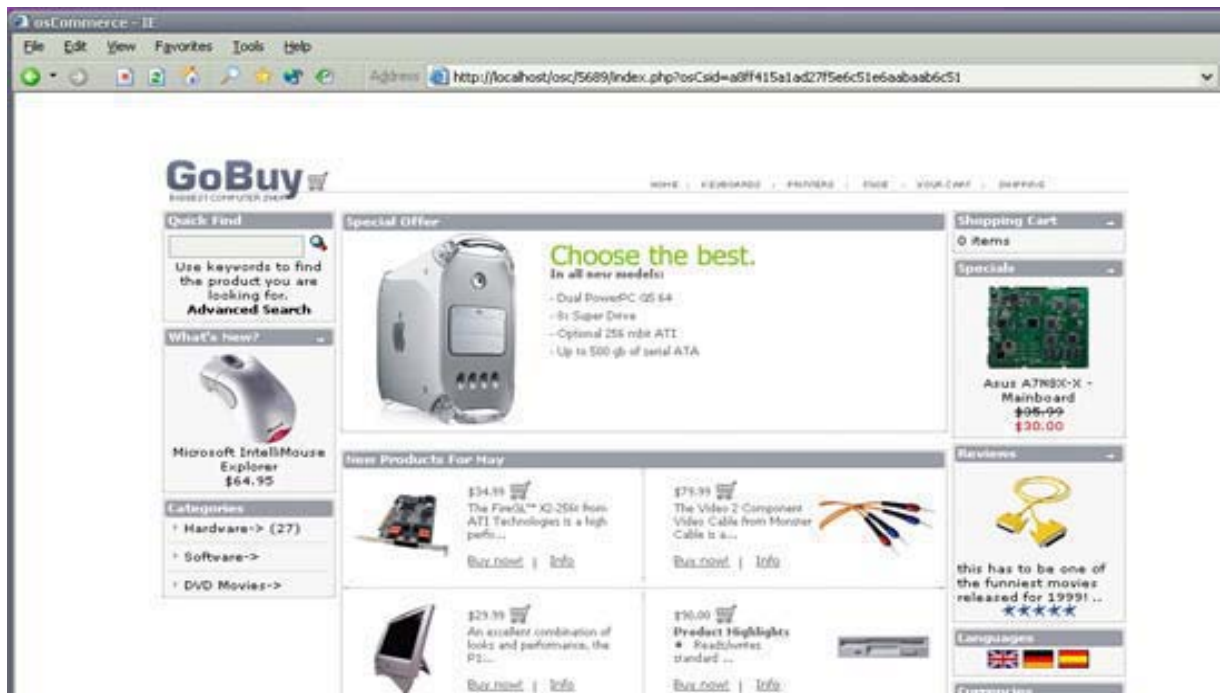
The configuration was successful!

Copyright © 2003 osCommerce

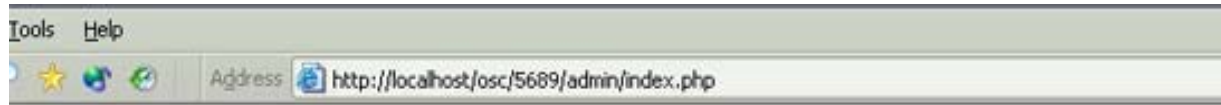
11. To have a look at your on-line shop, press **Catalogue**.



- You will have 2 or 3 notifications at the top of your browser. To hide them you should
- delete the catalogue **install** from **WEB\_ROOT/shop** folder
  - mark **WEB\_ROOT/shop/includes/configure.php** file as **read only**



12. To make any changes to your on-line shop, you should type **http://YOUR\_SITE/shop/admin/** with your browser. We recommend that you rename your admin folder with any other secret name (**secret\_name**) and enter the admin section using this name **http://YOUR\_SITE/shop/secret\_name/**



A screenshot of the osCommerce administration interface. The page has a dark blue background with white text. At the top left is the osCommerce logo. To the right of the logo are links for "Administration", "Online Catalog", and "Support Site". Below the logo is a sidebar with several sections: "osCommerce" (with links to Support Site, Support Forums, Mailing Lists, Bug Reports, FAQ, Live Discussions, CVS Repository, and Information Portal), "Orders" (with counts for Pending: 0, Processing: 0, and Delivered: 0), "Statistics" (with counts for Customers: 1, Products: 27, and Reviews: 1), and a security notice: "You are not protected by a secure SSL connection." The main content area is titled "Choose an action.." and features a grid of management options, each with an icon and a sub-menu: "Configuration" (My Store, Logging, Cache), "Modules" (Payment, Shipping), "Catalog" (Contents, Manufacturers), "Locations / Taxes" (Countries, Tax Zones), "Customers" (Customers, Orders), "Localization" (Currencies, Languages), "Reports" (Products, Orders), and "Tools" (Backup, Banners, Files). A language dropdown menu is set to "English".

E-Commerce Engine Copyright © 2003 osCommerce  
osCommerce provides no warranty and is redistributable under the GNU General Public License

Powered by osCommerce